

**PLAYER'S  
LTD.**

**GM MOTOR  
SPORT**   
**SERIES**

155 East Beaver Creek Road, Unit 1  
Richmond Hill, Ontario L4B 2N1  
Telephone: (416) 886-9492  
Fax: (416) 886-9495

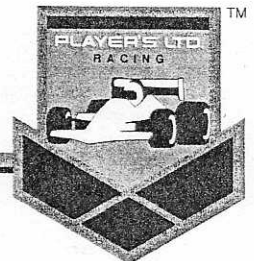
THE PLAYER'S LTD./GM MOTORSPORT  
REGULATIONS  
1991

PUBLISHED BY  
ASN CANADA FIA INC.  
PROFESSIONAL RACING AUTHORITY

April 18, 1991



**GOODYEAR**



CONTENTS

Introduction ..... Page 2 - 4

I Administration and  
Sanctioning Authority ..... Page 5

II Entrants and Entries ..... Page 6 - 7

III Driver Eligibility ..... Page 8

IV Championships ..... Page 9 - 11

V Vehicle Eligibility ..... Page 12 - 13

VI Vehicle Preparation  
for the Race Track ..... Page 14 - 20

VII Safety Items ..... Page 21 - 23

VIII Qualifying ..... Page 24

IX Penalties ..... Page 24

X Miscellaneous Provisions ..... Page 25 - 26

XI Recommended Vehicle Preparation for  
use on Public Thoroughfares ..... Page 27

Addendum "A" ..... Page 28

Addendum "B" ..... Page 29

The Player's Ltd./GM Motorsport Series  
1991

A Professional Series of races for showroom Stock Chevrolet Camaro Z28 and Pontiac Firebird Trans Am: "The Showroom Stock category shall be considered primarily as a form for the membership to race street stock automobiles. Cars raced shall be presumed to have been purchased primarily for street transportation." To maintain the integrity of showroom stock racing, three principles are followed; the vehicle will remain in "as delivered", and "as specified condition".

The G.M. supplied 1991 Player's Ltd./GM Motorsport Series Specification Manual and updates detail dimensions and characteristics of a number of (not all) performance related vehicle components. It is the competitor's responsibility at all times to ensure that replacement parts exactly match those detailed in the manual; merely matching part numbers or a parts book description is not necessarily a guarantee of an exact replacement.

In the event a supplied part does not conform to the Series Specification Manual specifications it is not authorized for Series competition and the competitor must immediately notify the Race Director's office and G.M. Motorsport so that appropriate action can be taken.

All adjustments must be to the manufacturer's specifications and/or within the manufacturer's specified tolerances. Adjustment to the limit of available range is not permitted. These three principles are consistent with the manufacturer's design intent.

Only vehicle alterations specified herein are permitted.

Sanctioning Authority:  
ASN Canada FIA Inc.  
Professional Racing Authority  
400 Esna Park Drive., #12  
Willowdale, Ontario  
L3R 3K2

Phone: (416) 479-4000  
Fax: (416) 479-7224

For further information, please contact:

Race Director

The Player's Ltd./GM Motorsport Series  
155 East Beaver Creek Road, Unit 1  
Richmond Hill, Ontario  
L4B 2N1

Phone: (416) 886-9492  
Fax: (416) 886-9495

The rules and regulations set forth herein are designed to provide for the orderly conduct of racing events and to establish minimum acceptable requirements for such events. These rules and regulations, in conjunction with the ASN Canada FIA Inc, Professional Racing Authority, shall govern the conduct of all Series of events and by participation in these events, all participants are deemed to have complied with these rules and regulations. No expressed or implied warranty of safety shall result from publication of, or compliance with, these rules and regulations. They are intended as a guide for the conduct of sport and are in no way a guarantee against injury or death to participants, spectators or others.

The Player's Ltd./GM Motorsport Series  
1991

I ADMINISTRATION AND SANCTIONING AUTHORITY

A) The ASN Canada FIA Inc., Professional Racing Authority (ASN), in conjunction with the Series Race Director, has designated a Professional Series of automobile races for Chevrolet Camaro Z28 and Pontiac Firebird Trans Am cars.

B) The Series will be sanctioned by ASN and administered by the Series Race Director.

C) These Series Regulations are issued by ASN and may only be amended or altered by ASN. Official bulletins issued by ASN shall be considered as part of and shall have the same validity as these Series Regulations.

D) In case of doubt as to the interpretation of these Series Regulations, the decision of ASN shall prevail and will be binding on all parties except as provided under the protest and appeal procedures specified in the ASN Canada FIA Inc. Professional Racing Authority, 1991 Sporting Code.

E) Events in the Series shall be held according to the conditions of:

1. The ASN Canada FIA Inc., Professional Racing Authority, 1991 Sporting Code
2. These Series Regulations
3. Official ASN and Series Bulletins
4. Event Supplementary Regulations
5. Official Instructions

## II ENTRANTS AND ENTRIES

### A) Series Registration

1. In order to race in the Player's Ltd./GM Motorsport Series a competitor must first register and be accepted for the Series. To do this, he or she must complete a Series Registration Form and send that form with the Series Registration fee of \$500.00 plus \$35.00 G.S.T. to:

Race Director  
Player's Ltd./GM Motorsport Series  
155 East Beaver Creek Road, Unit 1  
Richmond Hill, Ontario  
L4B 2N1

- A late entry fee may be charged at Series discretion.
2. Purchase a Series eligible car, and forward a copy of the sales contract with the Series Entry.
  3. Competitors must indicate which series the entry pertains to - East or West. Entrants for both series are required to pay an entry fee for both.
  4. Upon being accepted by the series Race Director, a competitor shall:
    - a) Receive a registered competition number for use in the Series.
    - b) Be placed on the Series mailing list and receive all Series bulletins, results and mailings.

- c) Be eligible to enter, earn and receive Series points in any Series event.
  - d) Be eligible for Series points awards.
  - e) Finalize car purchase.
  - f) Submit a completed Performance Declaration and a Performance Deposit in the amount of \$2,500.00. The Performance Deposit is refundable to the competitor at the end of the season under the conditions specified in the Performance Declaration.
  - g) Submit a completed Series media questionnaire.
5. The Performance Declaration forms shall be considered part of these regulations.
6. Each competitor must register with and be accepted into the Series prior to entering a Series race.
- B) Series registration forms, entry forms and additional information can be obtained by writing or phoning:

Race Director  
Player's Ltd./GM Motorsport Series  
155 East Beaver Creek Road, Unit 1  
Richmond Hill, Ontario  
L4B 2N1  
Tel: (416) 886-9492 Fax: (416) 886-9495

### III DRIVER ELIGIBILITY

- A) In order to be eligible to compete in a Player's Ltd./GM Motorsport Series event, a driver must hold a ASN Canada FIA Inc. Professional A Racing License, with at least one year of racing experience or equivalent and a valid provincial/state driving license.
- B) Experience equivalence will be solely at the discretion of the Series Race Director.
- C) Each driver must be equipped with and wear clothing and safety equipment complying with ASN Regulations.
- D) Each driver is required to wear the designated Series identification, as shown in Addendum A at the back of these regulations. Failure to display the Series crests in their approved locations during all official on track sessions and ceremonies may result in the loss of event points and prize money and/or all or part of the Series Performance Deposit.
- E) No driver may accumulate any demerit points to his/her provincial/state driving license during the Player's Ltd./GM Motorsport Series.
- F) Each driver, by his or her participation in the Series, agrees to voluntarily refrain from consumption of alcoholic beverages for a period of 24 hours prior to any official event, testing or practice.

#### IV CHAMPIONSHIPS

A) There will be two championships:

"Player's Ltd./GM Motorsport Series East" - a 10 race series to be contested in Eastern Canada, and

"Player's Ltd./GM Motorsport Series West" - a 5 race series to be contested in Western Canada.

B) The series schedules will be announced by separate bulletin.

C) CHAMPIONSHIP POINTS AWARDS

1) Series points will be awarded to finishers, in each East and West Series race, according to the following scale:

- 100 points for 1st
- 5 points less each position 2nd through 6th
- 4 points less each position 7th through 11th
- 3 points less each position 12th through 29th
- 2 points for leading the race (awarded only once to a driver per race)
- 2 points for leading most laps in a race
- 15 points for setting the fastest lap time in the qualifying session(s)
- 10 points for setting the second fastest lap time in the qualifying session(s)
- 5 points for setting the third fastest lap time in the qualifying session(s)

2) Series Race Prize Money for both East and West Series will be announced by separate bulletin.

D) The Player's Ltd./GM Motorsport East Championship and the title "Player's Ltd./GM Motorsport Series East Champion Driver" shall be awarded to the driver who accumulates the greatest number of points in the 1991 East Series according to the following format:

An East Series driver must score his or her best four results out of the first five races on the East calendar (schedule) and his or her best four results out of the second five races on the East calendar (schedule). The total of these eight races shall determine his or her final point total. A driver must count in his or her total eight races any race result in which he or she incurred a specific time or finishing position penalty. Event exclusion is regarded as a finishing position penalty.

The recipient of this title will be presented with Player's Ltd./GM Motorsport Series East Cup.

The Player's Ltd./GM Motorsport Series West championship and the title "Player's Ltd./GM Motorsport West Champion Driver" shall be awarded to the driver who accumulates the greatest number of points in the 1991 West Series. The recipient of this title will be presented with the Player's Ltd./GM Motorsport Series West Cup.

The "Rookie of the Year" (East and West) title and awards shall be presented to the driver who scores the most points among all rookie competitors. A rookie shall be defined as a competitor who has, prior to his first full season of Player's Ltd./ GM Motorsport Series competition, not competed in more than two Series points races.

In the case of ties (champion or rookie titles) in either East or West Series, the competitor with the greatest number of first-place results shall be placed ahead. If necessary, the number of second-place, then third-place, then fourth-place and further finishing results shall be considered as required to resolve the tie. If the tie cannot be resolved in this manner, the driver who achieved his or her initial first-place finish earlier will be placed ahead. Second-place and further finishing positions shall be similarly considered as required to resolve the tie.

E) A Series championship prize fund will be established and will be paid out to competitors following the conclusion of the Series. Payment will be according to the points held by each competitor in the overall East or West Series Championship.

## V VEHICLE ELIGIBILITY

A) A Player's Ltd./GM Motorsport Series Registration Certificate will be issued to qualifying vehicles. This certificate will detail the year and make of the vehicle and any authorized major component changes (Engine etc.). Vehicles must at all times conform to their issued certificate. This registration certificate must remain with the vehicle at all times and be available for presentation upon request by ASN or Series officials.

B) Eligible vehicles, authorized modifications, and required modifications are as defined in the ASN Canada FIA, Professional Racing Authority, 1991 Sporting Code and Series Regulations and amendments thereto issued as ASN bulletins. The only modifications allowed are listed in the Series Regulations and ASN bulletins. No other modifications are allowed. Note: Showroom Stock will remain in an "as delivered" and "as specified" condition. The vehicle identification number (VIN) shall correspond with the model automobile classified. VIN plates or stampings must remain in place at all specified locations on the vehicle and must match unless otherwise authorized by the Series Race Director.

C) Each vehicle will be required to display the designated Series identification, as in addendum B at the back of these regulations. Failure to display the Series identification in their approved locations during all official on track sessions may result in the loss of event points and prize money and/or all or part of the Series Performance Deposit.

Any potential conflicting sponsorship must be presented to, and approved by, the Series Race Director.

Competitors shall not enter into any agreement which would preclude the display of any designated series identification.

D) The eligible vehicles are:

1991 Chevrolet Camaro Z28 with RPO-R7U and a Series eligible engine.

1991 Pontiac Firebird Trans Am WS6 with RPO-R7U and a Series eligible engine.

## VI VEHICLE PREPARATION FOR THE RACE TRACK

The following represent the only items authorized in the preparation of a vehicle for competition other than safety items as required. All adjustments must be at the manufacturer's specification and/or within the manufacturer's specified tolerances. Adjustment to the limit of the available range is not permitted unless specifically authorized.

- A) Hub caps, Jack and tools must be removed.
- B) Spare wheel and tire may be removed.
- C) Ignition timing must be no greater than 6 degrees BTDC with a tolerance of + 1 degree.
- D) Front wheel alignment values for caster, camber and toe are free. Only the manufacturers' specified methods of adjusting caster, camber and toe are permitted. No bending, stretching, grinding, slotting, reforming or re-drilling to effect alignment change is permitted except as authorized below or by 1991 Professional Racing Authority, ASN Canada FIA, Section 16.1 B).

In order to achieve desired alignment, the front shock strut to steering knuckle attachment holes may be slotted and the strut mount assembly and wheelhouse reinforcement may be slotted or re-drilled as necessary. In slotting or re-drilling caution must be exercised so as not to weaken or impair the integrity of the shock strut, strut mount assembly or wheelhouse.

E) Tires

Only Goodyear Eagle ZR tires of P245 50 ZR16 size are permitted AS SUPPLIED on the production vehicle or by Competition Tire Canada or its designated agents.

NOTE: Tires will be supplied in dry race tread depths of 3/32" to 5/32" or as full tread tires (as supplied on new production vehicles).

Tires may not be modified in any way.

Buffing or removal of any markings from the tire sidewall is prohibited.

Tire pressures are free.

All questions as to tire legality shall be at the sole discretion of the Series Chief Steward, or his designate, and no appeal will be allowed.

F) Fluid hoses and clamps, oil filter, air filter and belts (fan, alternator, etc.) and other items subject to normal wear and tear in day to day usage may be substituted with others of equivalent OEM specifications.

Camaro cars only may use as alternative air filter any one of the following approved elements:

AC	#A918C
FRAM	CA3915
WICKS	46140
AMSOIL	LT58
HASTINGS	AF871
FLEETGUARD	AF401
MOTOMASTER	23-3087-2

No other part # or manufacturer is permitted unless a sample is first submitted to the series director, or his appointee, for evaluation and is subsequently approved by him.

NOTE: K&N #332008 is specifically not permitted.

G) Firebird induction kit may be replaced by part #10951225 as supplied.

H) Each competitor must have available upon request by Series officials at each event, an official factory service manual for his make, model, and year.

I) Radios: Two-way radios may be installed and used. No other telemetric signals may be transmitted from or received by the vehicle during official track sessions without the prior express written consent of the Race Director.

J) Brakes: 'The following BRAKE PAD SET INSTALLATIONS ONLY ARE PERMITTED: FRONT: SET PART #10104485 (Stock Production) OR SET PART #10951739 (Competition). REAR: SET PART #10174840 (Stock Production) OR SET PART #10951815 (Competition).

Front brake temperature sensing thermocouples and in-car brake temperature monitoring equipment are permitted.

Front brake flex lines may be replaced with "Aeroquip" type brake lines.

Brake cooling kits as supplied by GM may be used.

K) Driving lights may be removed from both Firebird and Camaro cars.

L) Engine Oil: May be substituted with other equivalent to OEM specification. Oil additives are unrestricted.

M) Spark Plugs: May be substituted with other equivalent to OEM specification.

N) Seats: Optional driver's seat is permitted. Any optional seat must weight a minimum of 33 lbs. (15 kilograms). It is recommended that the drivers seat be slotted to permit passage of shoulder harness, anti submarine strap and lap belts.

O) Ride Height: For both the Chevrolet and the Pontiac the following ride height measurements are in effect:

Front: Ride height will be measured from the ground to the centre of the lower control arm front bushing bolt head. Minimum ride height will be 7.625 inches (19.4 cm), with 35 psi (240 kpa) tire pressure regardless of alignment settings.

Rear: Overall free spring height must be no shorter than 14.0 inches (35.5 cm).

P) Weight: Vehicle total weight and weight distribution side to side and fore and aft are to remain as delivered, modified only by the weight of racing safety equipment and fuel.

Minimum vehicle weight must be no less than the delivered weight plus 105 lbs. (48 kg.)

Weight difference between left and right front corners when weighed shall be no greater than 105 lbs. (48 kg.)

Q) Engines are sealed and may not be tampered with in any way. Tampering with any engine fasteners immediately voids the vehicles' Series Registration Certificate and is sufficient grounds for disqualification. If minor engine repairs are required, the vehicle must be impounded by ASN scrutineers. All repairs and immediate re-sealing must be conducted under the scrutiny of ASN designated officials. Also see Professional Racing Authority, ASN Canada FIA 16.1 A).

R) Series supplied catalytic converter by-pass system must be used on track. Internal joints and junctions of the by-pass system may be de-burred or ground to assure exhaust flow consistent with design intent. There may be mandatory modifications to the system for certain races to conform to local noise requirements.

Series supplied exhaust system must be used on track with side outlet plates removed.

S) The accelerator pedal may be modified to facilitate heel-and-toe action. No change may be made to the accelerator lever or any other parts. Any modification must ensure safety both on the track and on the road.

T) A "dead-pedal" may be fitted.

1991:12

U) Air deflectors may be added to the windshield wiper arms.

V) Engine calibration prom MUST BE substituted with the series supplied prom P.N. 10952080.

W) In-car video cameras are permitted, however the camera, its associated equipment and its mount are subject to ASN scrutineering approval.

X) Wheels: The following wheels (rims) are authorized for use in Series cars:

Camaro: All 1986 thru 1991 GM production 16" Camaro wheels (rims).

Pontiac: All 1986 thru 1991 GM production wheels (rims) (designated N96 or PW7). Also authorized (for Pontiac only) are Series supplied 16" PW7 light-weight wheels (rims). Pontiacs must use complete sets of N96 or PW7 wheels (rims).

Note: Front wheels (rims) only are authorized for the front.

Rear wheels (rims) only are authorized for the rear.

Y) Components of Limited-Slip Differential Spring Kit P.N. 10952256 may be used selectively to adjust break-away torque. A maximum of five springs may be utilized.

Z) Radiator side baffles and V.A.T.'s relays as supplied by GM Motorsport are hereby authorized.

AA) The Supplemental Inflatable Restraint system may be disabled and/or the production "air bag" and steering wheel assembly may be removed and replaced with the respective pre-1991 G.M. production steering wheel assembly (reference 1991 Series Technical Manual).

BB) Front rail reinforcement Part #14042019 is hereby authorized.

CC) Rear control arm and bushings are hereby authorized as follows:

Control arm Part #10164151 or #10081636,  
Bushings Part #10081639 or #10164152

## VII SAFETY ITEMS

A) A roll cage as specified and in accordance with Professional Racing Authority, ASN Canada FIA, 1991 Sporting Code must be installed.

Roll cages must also meet the following criteria:  
(Professional Racing Authority, ASN Canada FIA, 1991 Sporting Code).

1. Must be bolted (not welded) into the automobile at 6 (only) contact points.
2. Contact plates must be a minimum of 24 sq. inches (61 sq. cm.) in area, however no contact plate may exceed 30 sq. inches (76.2 cm.) of area and no plate side may measure longer than 6 inches (15.25 cm.). Contact plates must be reinforced by a back-up plate of identical material and of an area as close as possible to that of the roll cage contact plate limited only by the shape and characteristics of the F-car platform.
3. The roll cage must be contained entirely within the passenger compartment. No part of the cage may penetrate the firewall.
4. Horizontal side impact protection is required on the driver's side and recommended on the passenger side. Driver's side impact protection must consist of at least 2 bars equal in size and strength to the material used in the roll cage main structure. All side impact protection should be removable. Armrest and door storage compartment removal to facilitate installation is permitted.

5. Roll cages must weigh a minimum of 81.5 lbs. (37 kilograms) and must be removable from the vehicle with hand tools (no cutting is allowed), while the vehicle doors and rear hatch remain installed. An easily visible inspection hole of at least 3/16 inch (6 millimeter) diameter must be drilled in a non-critical area of every main roll cage tube to allow verification of wall thickness.
6. Protective padding may be added to the roll cage provided that driver vision is not obstructed. Such padding is strongly recommended.
7. "Header cross bar" (any cage cross member roughly paralleling the windshield forward of the driver) must be readily removable for street use.
8. Interior trim may be cut or modified only to the extent necessary to permit roll cage installation.

B) Installation of an on board fire extinguishing system is required. On board extinguishing systems must have a minimum capacity of 10 lbs. (4.55 kgs.) a minimum of three outlets and a maximum of four. Outlets may be located in the following combinations only. One at engine, two in driver compartment; or two at engine, two in driver compartment; or one at engine, 2 in driver compartment, one at fuel tank. Engine compartment outlet(s) must be mounted at the height of the fuel delivery system and be aimed at the engine. Driving compartment outlets must be mounted on the roll cage, one aimed forward and one aimed rearward. Systems must be fully charged and operational during all on track sessions. All on board extinguishing systems must be approved by the Series Chief Scrutineer at the beginning of the season.

C) A driver safety harness system as specified in ASN Sporting Code is required.

D) Headlights, parking lights, driving lights and side marker lights must be taped. Brake lights must comply with Professional Racing Authority, ASN Canada FIA, 1991 Sporting Code, Section 16.1 I).

E) Cars must compete with the driver's window fully open. An ASN approved driver's side window safety net is required. The passenger window must also be fully open during oval track competition.

F) Interior rearview mirror may be replaced. A multi-type mirror must not extend beyond the confines of the interior.

G) The ignition key only, with nothing attached, must be used in the ignition lock. The rear hatch (trunk) key must be located in the rear hatch (trunk) lock and be taped or secured so as to facilitate emergency personnel access to the car through the rear hatch.

H) The fixed mast radio antenna must be removed for practice, qualifying and races.

## VIII QUALIFYING

A) Races will be gridded in order of driver's qualifying times, except that the top six qualifiers will start in inverted order. Specifically; it is the driver who qualifies, not the car.

B) Tire changes are not permitted during a qualifying session without the expressed consent of the Chief (or acting Chief) Series Scrutineer.

## IX PENALTIES

Monetary penalties may be assessed by the Series Chief Steward against drivers accumulating demerit points against their Provincial/State driving licenses during the race season.

Competitors who are penalized may be asked to show cause for their continued participation in the Player's Ltd./GM Motorsport Series.

## X MISCELLANEOUS PROVISIONS

A) At any reasonable time during the season the Series Race Director, upon supplying a new part, may require, as part of an ongoing Engineering Analysis Program, the free exchange of any part of the Series car, up to and including the entire car.

B) Appearance shall be neat and clean. Automobiles that are dirty, either externally or in the engine and passenger compartments, or that show bodywork damage or that are partially or totally in primer, or that do not bear the prescribed identification marks shall not be approved for competition. In an effort to encourage the neat and clean appearance of the cars in the Series, competitors and/or entrants may use painting and/or decals to accomplish this end.

C) All crew members working in the pit lane must be dressed in neat, clean and identifiable team uniforms. Crew uniforms must include the designated Series identification (location to be announced by Series bulletin).

D) Although every effort will be made to organize the Series and distribute the prize money as planned, these regulations shall not be considered to be a contractual offer. Neither ASN nor any organizer or sponsor intend any commitment to third parties.

E) In order to be classed a race finisher a competitor must complete no less than 50% of the total race laps run at the checkered flag.

F) Language and measurement units in these regulations were originally drafted in English. In the event of a difference between the English text and any other translation or measurement unit (i.e. metric), the English text or units shall be considered as being authentic and shall prevail.

G) It is a condition of the organizer, being issued with an organizing permit, that he is required to take out participant accident and third party liability insurance covering all participants. Upon signing of a waiver and release and being granted credentials, all participants must be covered under the terms of this policy.

H) The Series Chief steward is responsible for the uniformity and consistency in interpretation and enforcement of Series regulations. In this regard, the Series Chief steward, the Clerk of the course, and the Series Race Director shall work closely together.

XI RECOMMENDED VEHICLE PREPARATION FOR USE ON  
PUBLIC THOROUGHFARES

A) Tires must comply with all applicable provincial/  
state and federal laws and be fully roadworthy.

B) Components of the roll cage may be in breach of  
Canadian motor vehicle safety regulations and should  
be removed and/or padded accordingly.

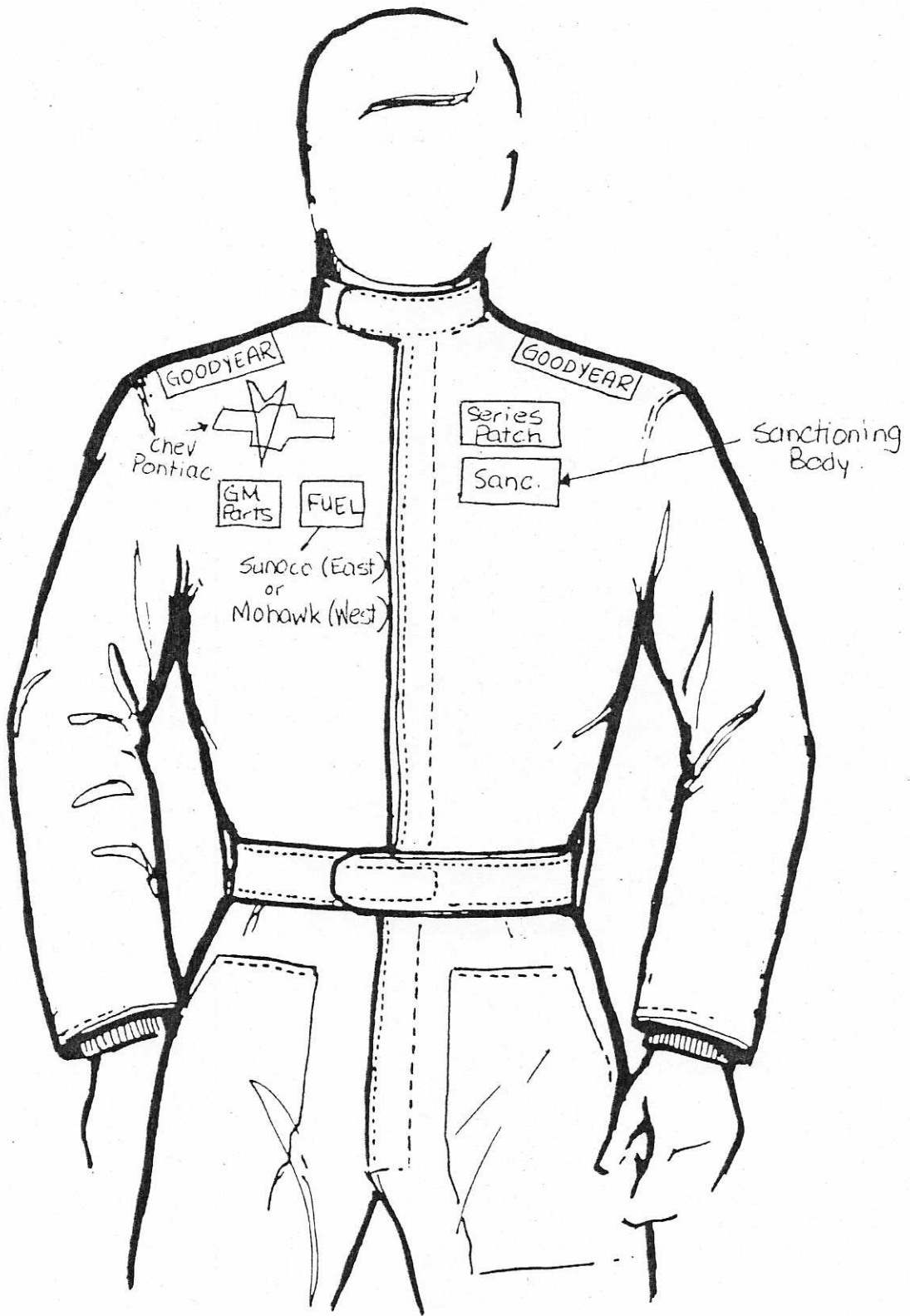
C) All lights must be untaped and fully operational.

NOTE: THE OEM SUPPLEMENTAL INFLATABLE RESTRAINT SYSTEM  
AND 3-POINT HARNESS IS THE ONLY OCCUPANT RESTRAINT  
SYSTEM LEGAL FOR STREET USE.

File: RULEBOOK.91

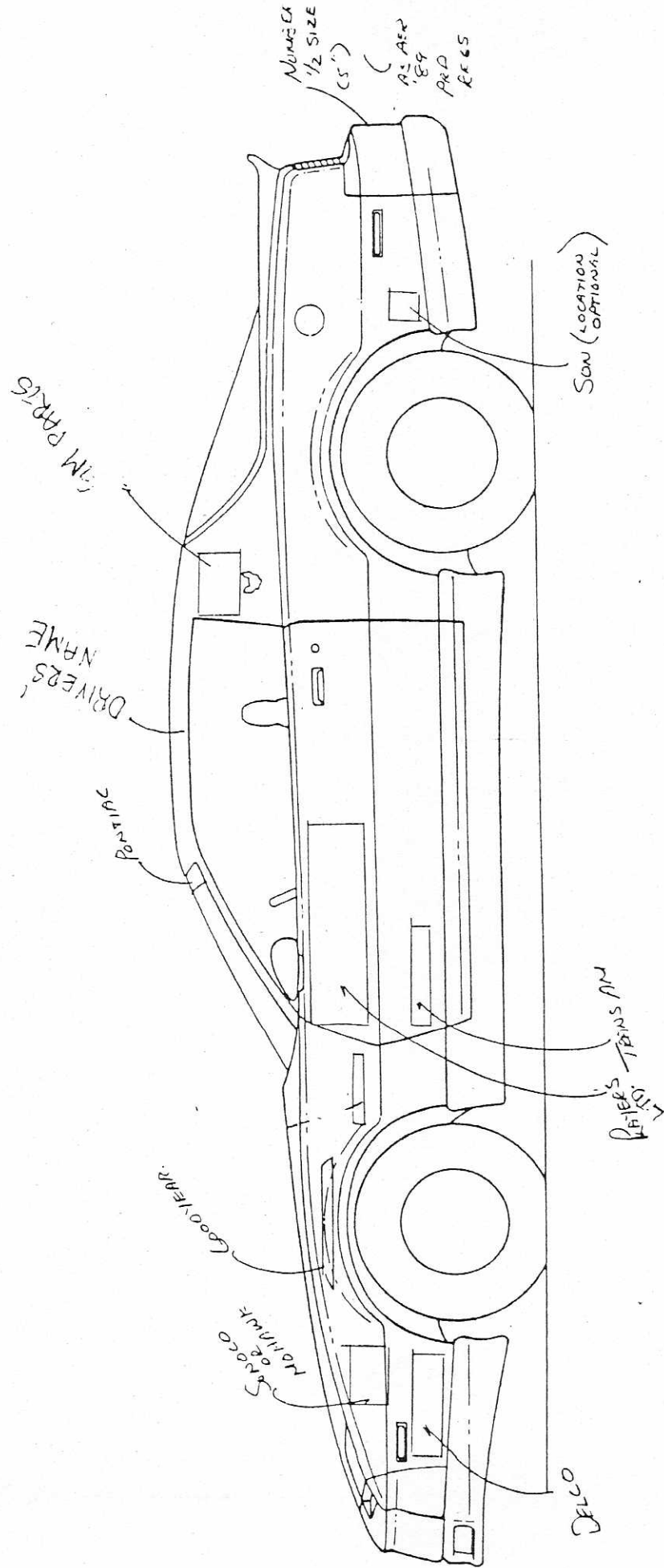
ADDENDUM

"A"

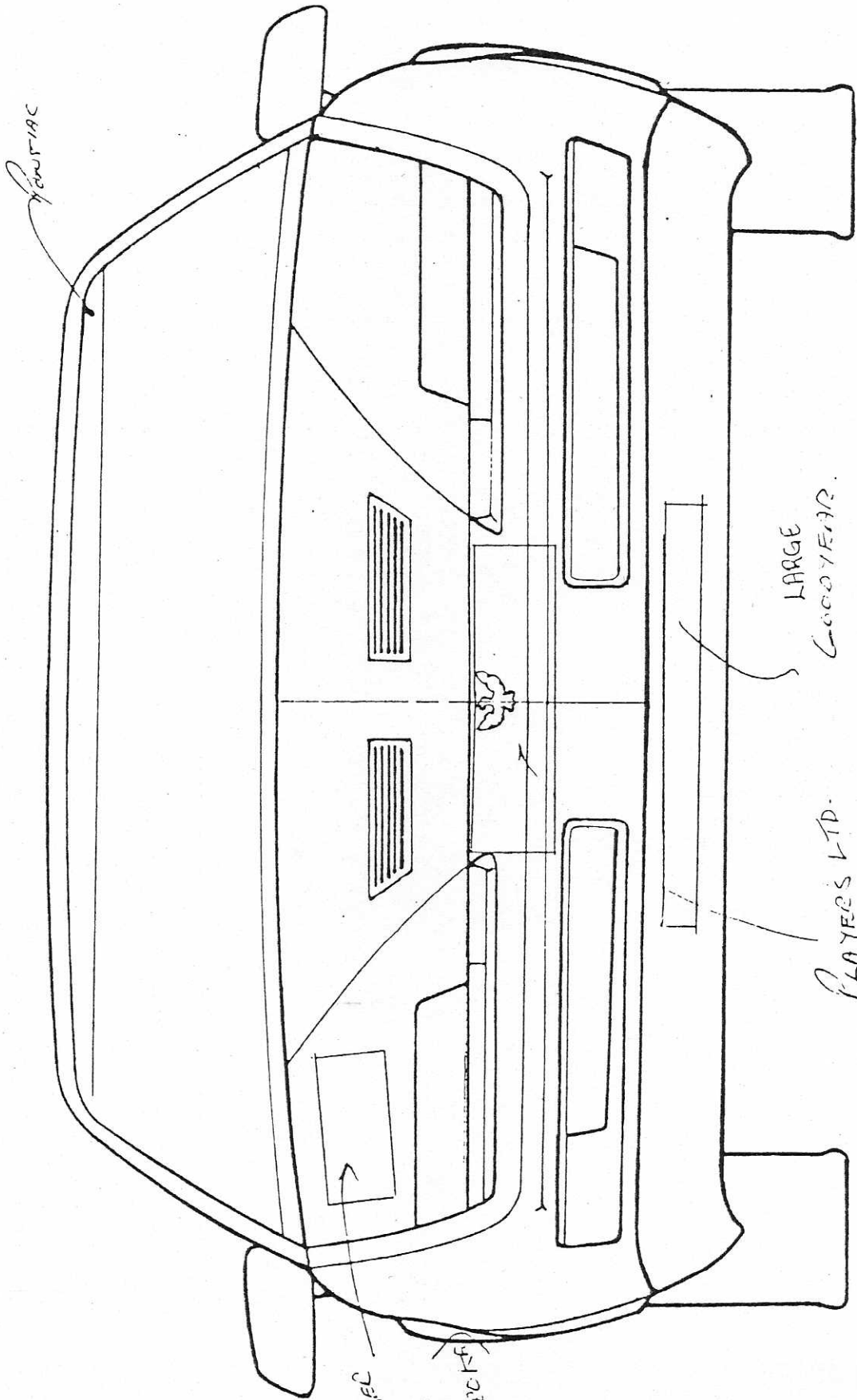


ADDENDUM

"B"



FIREBIRD



NOTE - Above hood-line  
Spent on 8 1/2", below  
hood-line four  
on 9 1/2".

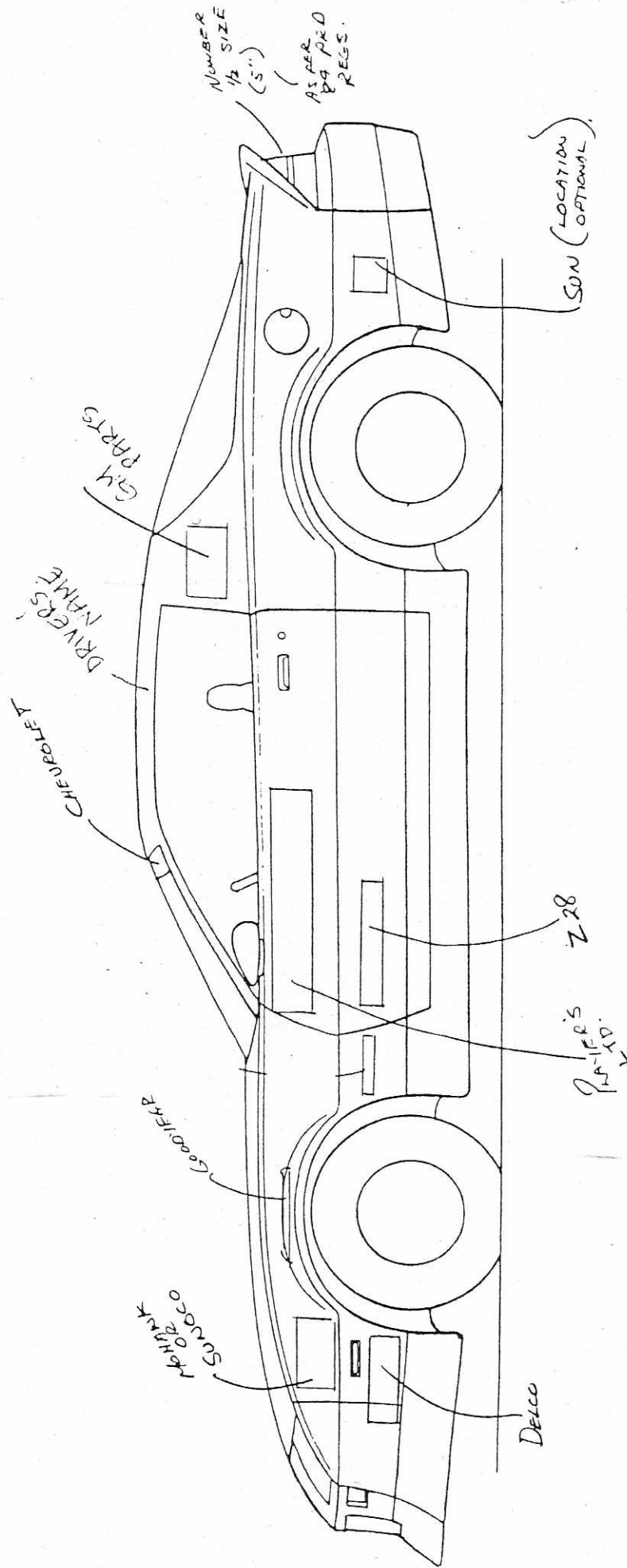
NUMBER  
2" HIGH  
2" STROKE

LARGE  
GOODYEAR

PLAYERS LTD.

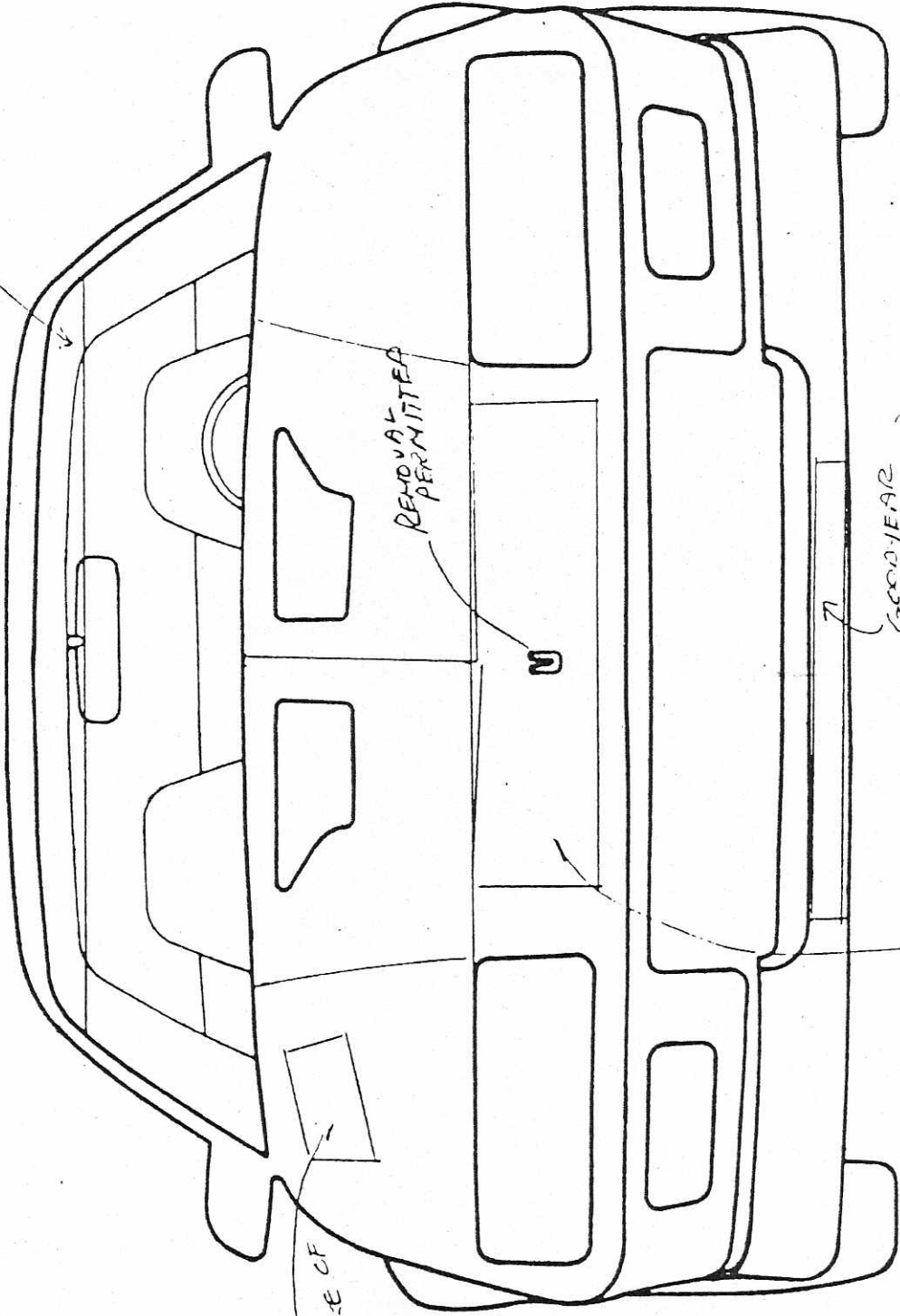
HONDA

HONDA



CAMARO

CHEVROLET



CAR  
NUMBER  
STAKE OF  
10" x 2.0"

REMOVAL  
PERMITTED

N

GOODRICH  
(LARGE)

PLUMMER'S  
LTD.